

DRYCONN®

WATERPROOF CONNECTORS

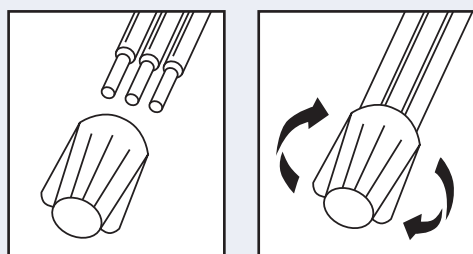
Filled Connectors for Direct Bury Use



INSTALLATION INSTRUCTIONS

IMPORTANT: Turn off power before installing or removing connector. Product to be used in accordance with local and national codes.

1. Strip wires 5/8" (15.9mm).
2. Align any frayed strands or conductors.
3. Pre-twisting unnecessary. Place stripped wires together with ends of insulation even.
4. Twist connector onto wires pushing firmly until hand-tight. Do not over torque.
5. Wipe sealant in and around conductors and connector opening while tightening. Do not reuse.



Small Direct Bury* Waterproof Connectors

| Catalog # | Selling Unit |
|-----------|--------------|
| 10444 | Bag of 10 |

PRODUCT SPECIFICATIONS & MEASUREMENTS

Max. Voltage: 600V max. building wire
(1000V max. signs or luminaires)

Connector Size: 1 19/64" x 43/64"

Wire Type: Copper/Copper

Wire Range: Min #18/Max #12

Temperature Rating: 105°C (221°F)

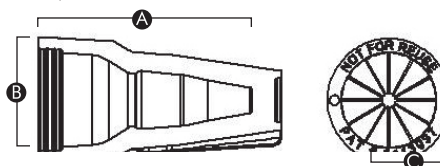
UL Designation: MWP

Measurements (Inches):

A - 1.30

B - 0.67

C - 0.51



NEC Required for Outdoor Connections



UL Listed as a Sealed Wire Connector. For use in dry, damp, wet locations below or above grade when used in an enclosure. *For use in direct bury applications when operating at 30 volts or less.

Selected 600V Wire Combinations
For use with solid and/or stranded combinations.

| | | |
|---------------|---------------|-------------------------|
| 4-6 #18 | 2-6 #16 | 2-4 #14 |
| 2-3 #12 | 2 #12 w/1 #14 | 1 #12 w/1 #18, 16 or 14 |
| 3 #16 w/2 #18 | 2 #14 w/2 #16 | 1 #10 w/1-2 #14 |

Contact factory for a complete list of wire combinations at 800.633.0232.



MADE IN USA

KING
INNOVATION®

50100-06 REV L 06/23

www.kinginnovation.com
(P) 800.624.4320
(F) 636.519.5410